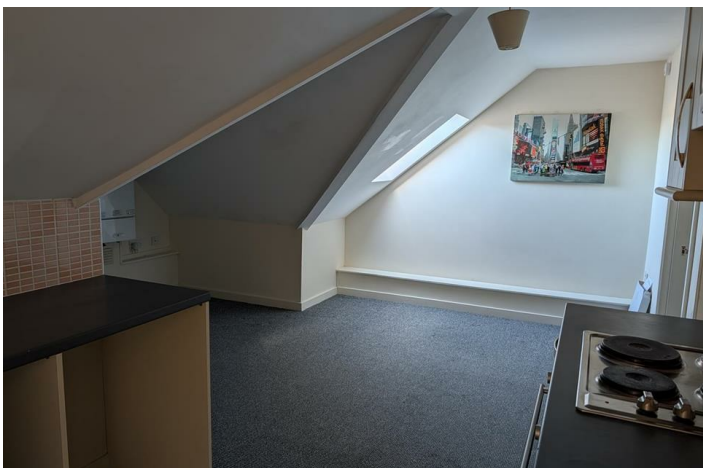


AVAILABLE



UNDER OFFER - 75 BUSH STREET,  
BURNLEY

Rent

£500 PCM

Deposit Required

£500



# 2 Bedroom Flat located in Pembroke Dock

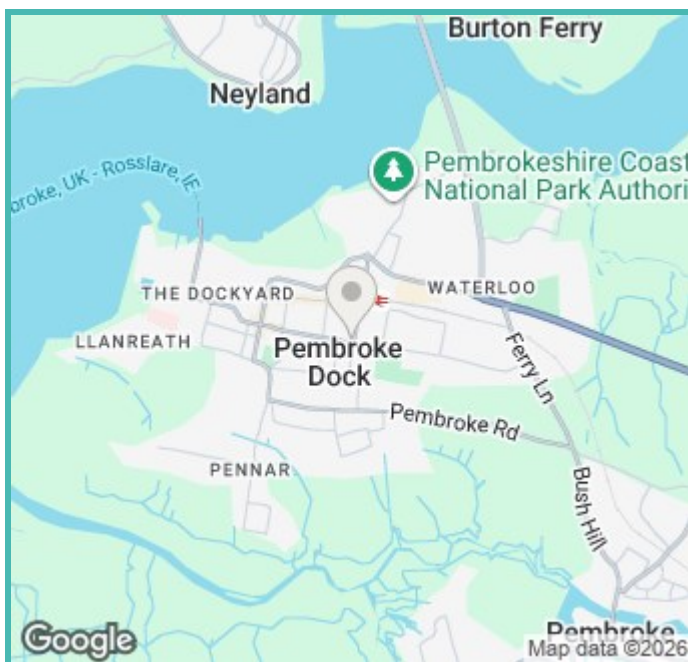
Welcome to this delightful flat located at 75 Bush Street in Pembroke Dock. This well-appointed property offers a comfortable living space, perfect for individuals or small families seeking a convenient rental option.

Spanning approximately 700 square feet, the flat features a spacious reception room that provides an inviting area for relaxation and entertainment. The two bedrooms are well-sized, offering ample space for rest. The bathroom is thoughtfully designed, ensuring both functionality and comfort.

Situated in a vibrant area, this flat benefits from easy access to local amenities, including shops, parks, and public transport links, making it an ideal choice for those who appreciate both convenience and community.

This property presents a wonderful opportunity for anyone looking to rent in Pembroke Dock. With its practical layout and prime location, it is sure to meet the needs of modern living. Do not miss the chance to make this flat your new home.

- Top floor 2 bed flat
- Rent £500 pcm. First month due ahead of occupation date
- Deposit £500
- Not suitable for cats/dogs due to lack of garden
- Communal car park
- Gas Central Heating
- EPC C (80) Exp 14/2/30. For More information on EPC visit [www.epcregister.com](http://www.epcregister.com)
- Council Tax Band A. Annual Charge £1,452.16 2026/27
- PLFM 20F



## Energy Performance

### Energy Efficiency Rating

	Current	Potential
Very energy efficient - lower running costs		
(92 plus) <b>A</b>		
(81-91) <b>B</b>		
(69-80) <b>C</b>	80	80
(55-68) <b>D</b>		
(39-54) <b>E</b>		
(21-38) <b>F</b>		
(1-20) <b>G</b>		
Not energy efficient - higher running costs		
<b>England &amp; Wales</b>	EU Directive 2002/91/EC	

Contact us on:

# 01437 766625

[info@pathwaylettings.org](mailto:info@pathwaylettings.org)

<https://pathwaylettings.co.uk/>



ZOOPLA

