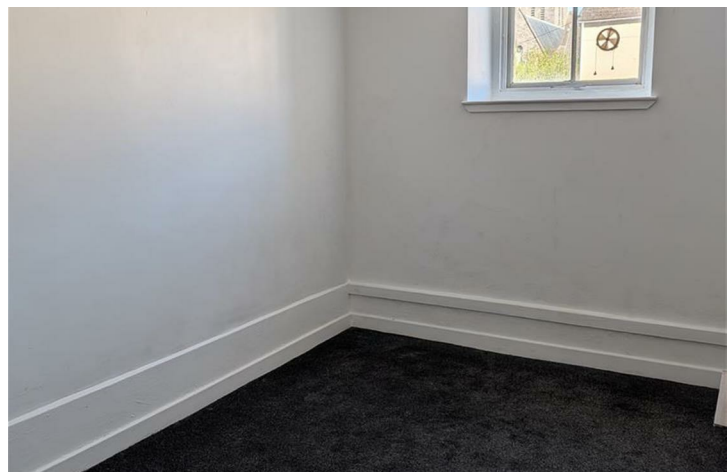


AVAILABLE



MEYRICK STREET, PEMBROKE DOCK

Rent

£550 PCM

Deposit Required

£650



1 Bedroom Flat located in Pembroke Dock

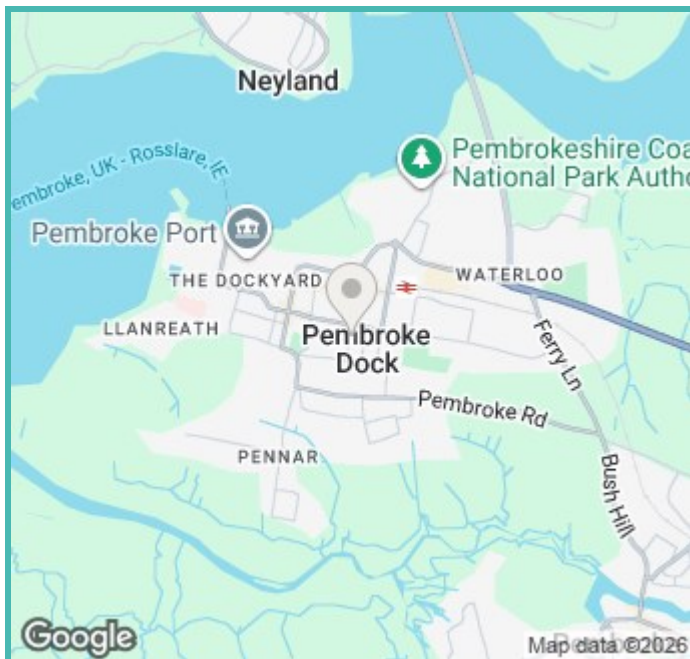
Welcome to this delightful one-bedroom flat located on Meyrick Street in Pembroke Dock. This property offers a comfortable living space, perfect for individuals or couples seeking a convenient and modern home.

Upon entering, you will find a well-proportioned reception room that provides a welcoming atmosphere, ideal for relaxation or entertaining guests. The flat features a spacious bedroom, which offers a peaceful retreat at the end of the day. The bathroom is well-appointed, ensuring all your needs are met with ease.

The flat is situated in a desirable area, providing easy access to local amenities, shops, and transport links, making it an excellent choice for those who value convenience. Whether you are looking to explore the beautiful Pembrokeshire coastline or enjoy the vibrant community, this location has much to offer.

This one-bedroom flat is available for rent and presents a wonderful opportunity for anyone looking to settle in Pembroke Dock. With its practical layout and prime location, it is sure to appeal to a variety of tenants. Do not miss the chance to make this charming flat your new home.

- **Ground floor 1 bedroom Flat**
- **Seperate front access to the rest of the building**
- **Rent £550 First Months rent in advance of Occupation date**
- **Bond £650**
- **Not suitable for pets**
- **Smoking outside only**
- **EPC 58 (D) Expiry 29/9/31. For More information on EPC visit www.epcregister.com**
- **Council Tax Band A £1,452.16 2026/27**
- **PLFM 27B**



Energy Performance

Energy Efficiency Rating

	Current	Potential
Very energy efficient - lower running costs		
(92 plus) A		
(81-91) B		
(69-80) C		78
(55-68) D	58	
(39-54) E		
(21-38) F		
(1-20) G		
Not energy efficient - higher running costs		
England & Wales	EU Directive 2002/91/EC	

Contact us on:

01437 766625

info@pathwaylettings.org

<https://pathwaylettings.co.uk/>



ZOOPLA

