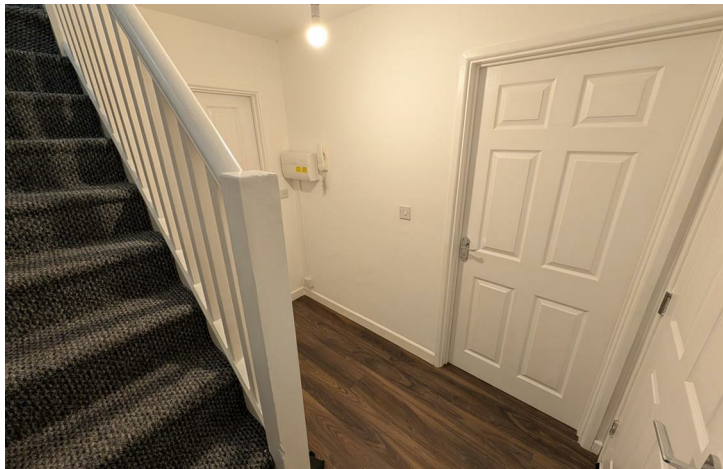


AVAILABLE



MEYRICK STREET, PEMBROKE DOCK

Rent

£550 PCM

Deposit Required

£650



1 Bedroom Flat located in Pembroke Dock

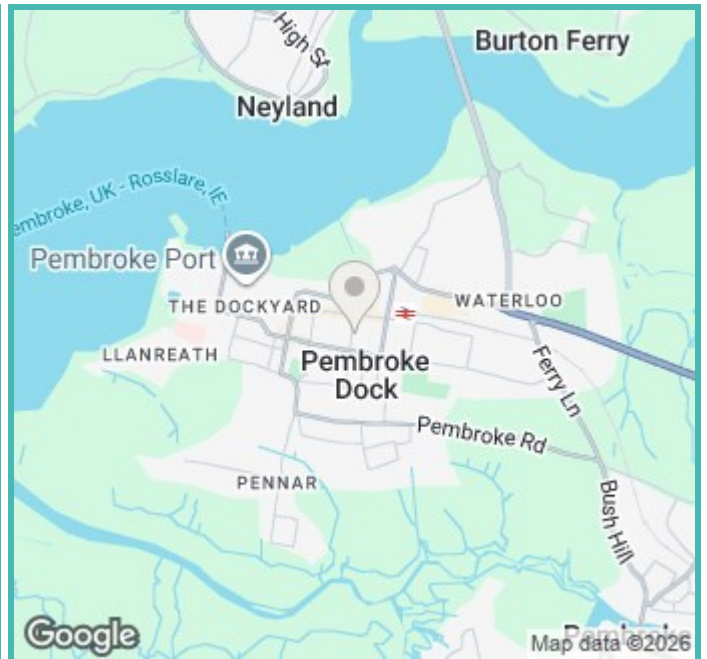
Welcome to this delightful one-bedroom flat located on Meyrick Street in Pembroke Dock. This property offers a unique mezzanine layout, providing an open and airy feel that maximises the use of space. The living area is well-proportioned, making it an ideal setting for relaxation or entertaining guests.

The flat features a modern bathroom, designed with both style and functionality in mind. The kitchen is equipped with essential appliances, ensuring that you have everything you need for your culinary endeavours.

Situated in a convenient location, this property is close to local amenities, including shops, cafes, and public transport links, making it easy to explore the surrounding area. Whether you are a professional seeking a comfortable home or a couple looking for a cosy retreat, this flat offers a perfect blend of comfort and convenience.

Do not miss the opportunity to make this lovely flat your new home.

- **1 Bed Mezzanine Flat**
- **Rent £550 First Months rent in advance of Occupation date**
- **Bond £650**
- **Electric Heating**
- **Not suitable for pets**
- **Smoking outside of building only**
- **Council Tax Band A. Annual Charge 2025/26 £1,383.17**
- **EPC - 56 (D) Exp 19/10/2031. For More information visit www.epcregister.com**
- **PLFM 27L**



Energy Performance

Energy Efficiency Rating

	Current	Potential
Very energy efficient - lower running costs		
(92 plus) A		
(81-91) B		
(69-80) C		78
(55-68) D	56	
(39-54) E		
(21-38) F		
(1-20) G		
Not energy efficient - higher running costs		
England & Wales	EU Directive 2002/91/EC	

Contact us on:

01437 766625

info@pathwaylettings.org

<https://pathwaylettings.co.uk/>

ClientMoney
Protect

Rhentu
Doeth
Cymru
Rent
Smart
Wales

ZOOPLA

The Property
Ombudsman