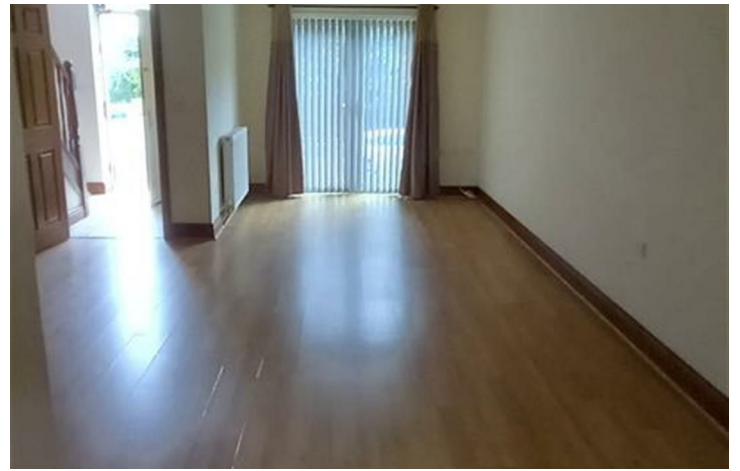


LET AGREED



NOW LET- KENSINGTON GARDENS

Rent

Deposit Required

£1,200 PCM £1,200

PATHWAY LETTINGS | Pathway

3 2 2 C

3 Bedroom House located in Haverfordwest

Nestled in the charming area of Kensington Gardens, Haverfordwest, this delightful three-bedroom house offers a perfect blend of comfort and convenience. With two spacious reception rooms, one could also be used as an additional bedroom. The well-appointed kitchen and dining area provide a welcoming space for family meals and gatherings.

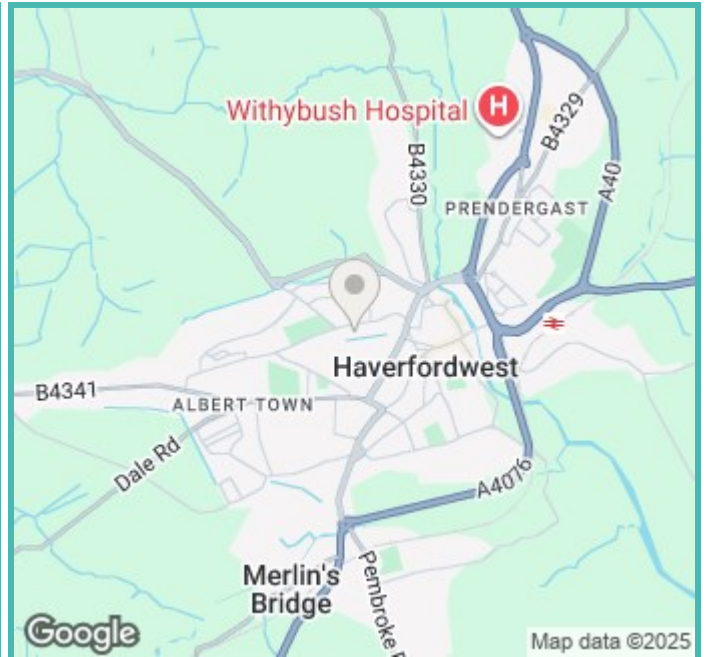
The house features three generously sized bedrooms, ensuring ample space for a growing family or for those who appreciate extra room for guests or a home office.

Gas central heating throughout the property ensures a warm and inviting atmosphere during the cooler months. Additionally, the property includes parking for one vehicle, a valuable asset in this desirable location.

Available for rent at £1200 per calendar month, this home is an excellent opportunity for those seeking a comfortable living space in a vibrant community. A bond of £1200 is required, providing peace of mind for both tenants and landlords alike.

This property is not just a house; it is a place to create lasting memories. With its prime location and thoughtful layout, it is sure to attract interest from those looking to settle in Haverfordwest. Do not miss the chance to make this lovely house your new home.

- 4 Storey 3 Bed House with Parlour
- Rent £1200pcm. First month required up front
- Bond £1200
- Gas Central Heating
- Council Tax Band E. Annual: £2,556.15 for 2025-2026
- EPC C (77) Expires 29/1/30.
- Small pets considered
- PLFM 25A



Energy Performance

Energy Efficiency Rating

	Current	Potential
Very energy efficient - lower running costs		
(92 plus) A		
(81-91) B		
(69-80) C	77	84
(55-68) D		
(39-54) E		
(21-38) F		
(1-20) G		
Not energy efficient - higher running costs		
England & Wales	EU Directive 2002/91/EC	

Contact us on:

01437 766625

info@pathwaylettings.org

<https://pathwaylettings.co.uk/>

